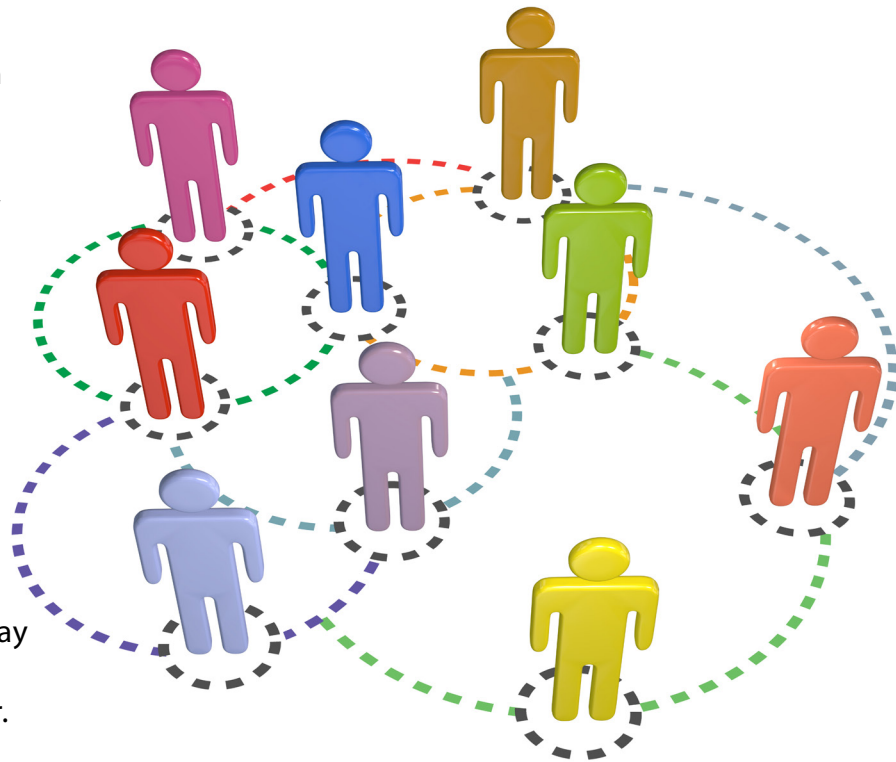


# Connecting the dots: It is priority on the ATO's agenda

The capabilities and scope of the Australian Taxation Office (ATO) are at an all-time high. The ATO, along with other Australian government agencies, are utilising the resources at their fingertips, such as data-matching, to rigorously analyse Australian taxpayers.

Despite honest and thorough declarations, taxpayers can still be targeted for an audit, enquiry, investigation or review by the ATO. The costs incurred can be significant, even if the lodgements are correct, and no further adjustments are made. The ATO are making sure that every step of the way they are connecting the dots to every transaction and interaction of a taxpayer.



## Historical ATO focal areas and facts

- **Data matching:** The ATO typically has more than 640 million transactions reported to them annually. The ATO will contact in excess of 450,000 taxpayers for data matching concerns.
- **Cash economy:** Annually there are approximately 245,000 pursuits around the cash economy.
- **SMEs:** More than 30,000 reviews, audits and checks of SMEs regarding employer obligations, PAYG, contractors, GST and excise obligations were undertaken over the course of a year.
- **GST refunds:** More than 43,000 GST and other indirect tax refund integrity checks, audits or reviews were conducted by the ATO.
- **Compliance:** 4,200 employers were targeted to be audited for their compliance with Superannuation Guarantee Charge (SGC) and 19,500 investigations were undertaken for non-payment of SGC, initiated by employee complaints.
- **Excess Contributions Tax:** 84,200 assessments and compliance checks were estimated to be made within a financial year with regard to the Superannuation Excess Contributions tax.
- **Benchmarking:** A review of the historic benchmarking activity conducted by the ATO found that over 75% of the cases involved were found to be compliant or of low risk.